

PAUL STARR DRIVE

16-15-30-1101-000-012  
TERHAAR & CRONLEY PROPERTY COMPANY  
1401 EAST BELMONT STREET  
PENSACOLA, FLORIDA  
32501  
ID-1/IN

16-15-30-1101-000-012  
TERHAAR & CRONLEY PROPERTY COMPANY  
1401 EAST BELMONT STREET  
PENSACOLA, FLORIDA  
32501  
ID-1/IN

16-15-30-1101-000-001  
TEX EDWARDS  
3255 COPTER ROAD  
PENSACOLA, FLORIDA  
32514  
ID-1/IN

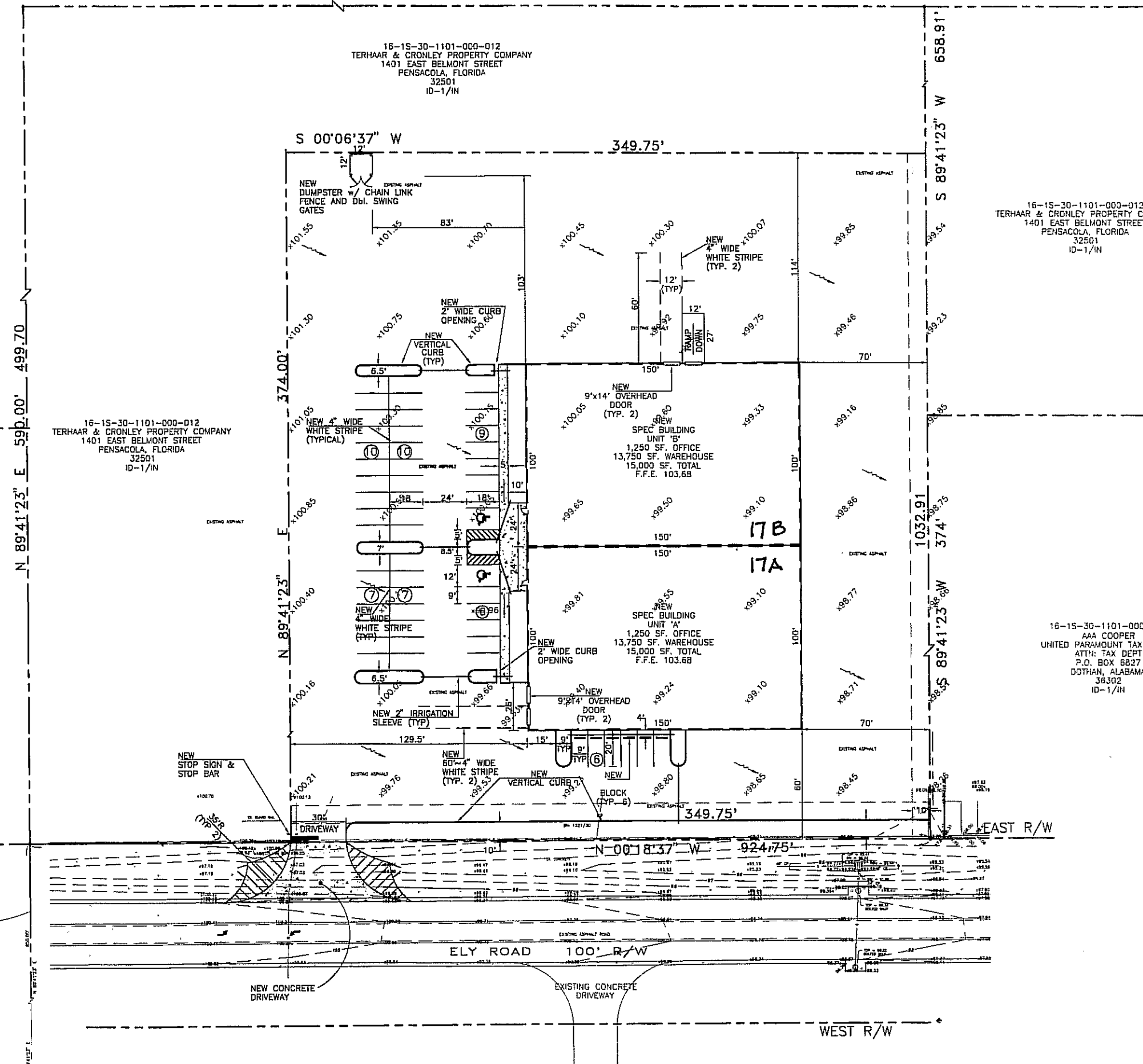
16-15-30-1101-000-012  
TERHAAR & CRONLEY PROPERTY COMPANY  
1401 EAST BELMONT STREET  
PENSACOLA, FLORIDA  
32501  
ID-1/IN

16-15-30-1101-000-027  
TREATED TIMBER PRODUCTS  
8810 ELY ROAD  
PENSACOLA, FLORIDA  
32514  
ID-1/IN

16-15-30-1101-000-014  
AAA COOPER  
UNITED PARAMOUNT TAX GROUP  
ATTN: TAX DEPT  
P.O. BOX 8827  
DOTHAN, ALABAMA  
36302  
ID-1/IN

SITE LEGEND

- P.O.C. Point of commencement
  - P.O.B. Point of beginning
  - B.M. Benchmark
  - ELEV. Elevation
  - INV. Invert
  - CP Concrete pipe
  - R/W Right of way
  - 1/2" Capped iron rod set, #7073
  - Nail and cap found #1035
  - Chain link fence
  - Electric line
  - Telephone line
  - Cable television line
  - Power pole
  - Guy wire
  - Light pole
  - Sanitary sewer manhole
  - Storm sewer manhole
  - Storm grate
  - Backflow preventor
  - Fire hydrant
  - Guard rail
  - Sanitary sewer line
  - Storm sewer line
  - Water line
  - Contour line
  - Spot elevation
- Existing drainage pattern



jh jh  
j h  
Consulting Engineering Services  
49 East Chase Street, Pensacola, Florida 32502  
(850) 434-0058  
www.jh-engineering.com  
Certificate of Authorization No. 00004669

ELY ROAD  
SPEC WAREHOUSES  
ELLYSON INDUSTRIAL PARK

SITE  
PLAN

Log is only with  
stamped seal

Revisions	
Date	Description
1.30.07	ESC. COUNTY COMMENTS
3.07.07	LANDSCAPING

Designed By: DPJ  
 Drawn By: PDS  
 Checked by: DPJ  
 Job No.: 060108